

## Pallet enclosures

Made to measure for each sleeve pack system

TRIPLEX pallet enclosures are as individual as the sleeve pack systems for which they are produced. Boasting top-notch processing, the highest quality and custom-made production to customer specifications. Thanks to tightly organised production and logistics processes, TRIPLEX pallet enclosures can be delivered in the shortest possible time.

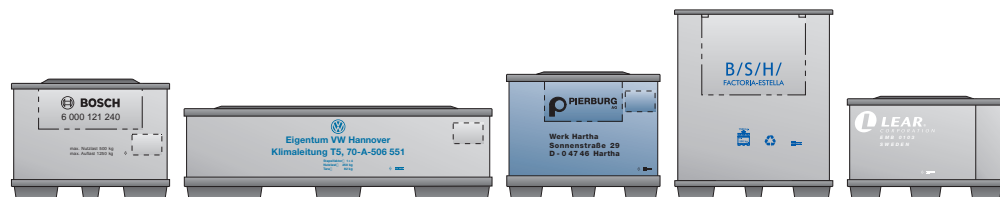


## TRIPLEX-pallet enclosures – perfectly manufactured according to customer requirements

Delivered worldwide, the lightweight yet very robust and reusable TRIPLEX pallet enclosures have been manufactured with high precision in Haiterbach in the Black Forest since 2003. Each pallet enclosure is tailor-made and manufactured by skilled specialists on state-of-the-art machinery and equipment according to customer requirements.

The TRIPLEX team is in constant contact with the customer, focusing on their specific product requirements to create optimum solutions in the shortest time possible. TRIPLEX customers are therefore optimally supported by being provided competent advice and prompt quotations as well as on-time delivery in excellent quality. Tell us your specific needs and we will develop your sleeve pack system according to your individual requirements.

The fastest way to reach us should you have  
any need: +49 (0)7465 69083-0 and  
[mail@triplex.info](mailto:mail@triplex.info)



## Optimal quality, service and sustainability

TRIPLEX pallet enclosures feature impressive low weight and excellent stability. The secret of this unique combination of complementary properties is provided by the special design of the three-layered structured core panels from which TRIPLEX pallet enclosures are manufactured exclusively.

To meet even the most individual customer requirements, a wide range of customization options is available. Right from the start, the TRIPLEX team actively advises its customers in order to develop the optimal pallet enclosure solution for the respective application. The high flexibility of the TRIPLEX team is not only reflected in the individual product design, but also in the efficient and prompt response to short-term modifications.

Precise processing, reliable execution and quick deliveries are the basis for unrivaled satisfaction of TRIPLEX's customers. TRIPLEX reusable pallet enclosures also contribute actively to protecting our environment by allowing many return cycles within the logistics chain. On top of that, they are made of 100% polypropylene, which means that they can be easily recycled at the end of their lifetime.

## Pallet enclosures – the advantages at a glance

- Excellent customer service
- One-stop-shop for all services
- Made-to-fit products
- Manufactured using intelligent "structured core panel" technology
- Unbeatable price-performance ratio
- State-of-the-art machinery and precision manufacturing
- Extremely light yet robust
- High quality and long service life
- 100 % polypropylene thus 100 % recyclable





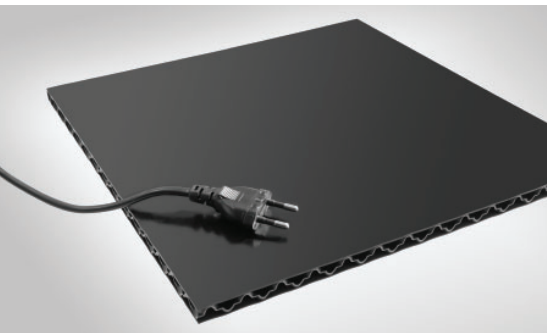


## Optional features – additional functionality

The basic version of the TRIPLEX pallet enclosure is made of TRIPLEX 10 structured core panels with 3,000 g/m<sup>2</sup> area weight in silver grey (similar to RAL 7001); it also features open edges and an M-folding for compact storage when collapsed. Highly specific designs – most of them compatible and thus combinable – are available to realize your individual pallet enclosure configuration.

To ensure maximum convenience and simple handling, all pallet enclosures may be equipped with closed edges, individual unloading flaps and various pallet/lid locking systems. If the sleeve needs to meet special requirements such as e.g. low flammability or high UV-resistance, it can be optimized accordingly for the storage in areas subject to increased risk of fire or UV-radiation.

Whatever optional features are needed, they all increase container functionality, ensuring you get the ideal carrier for your goods.

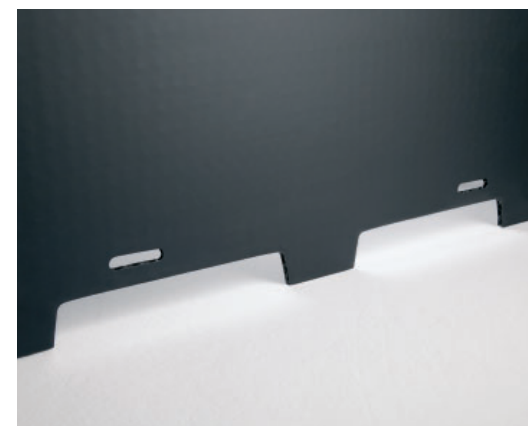


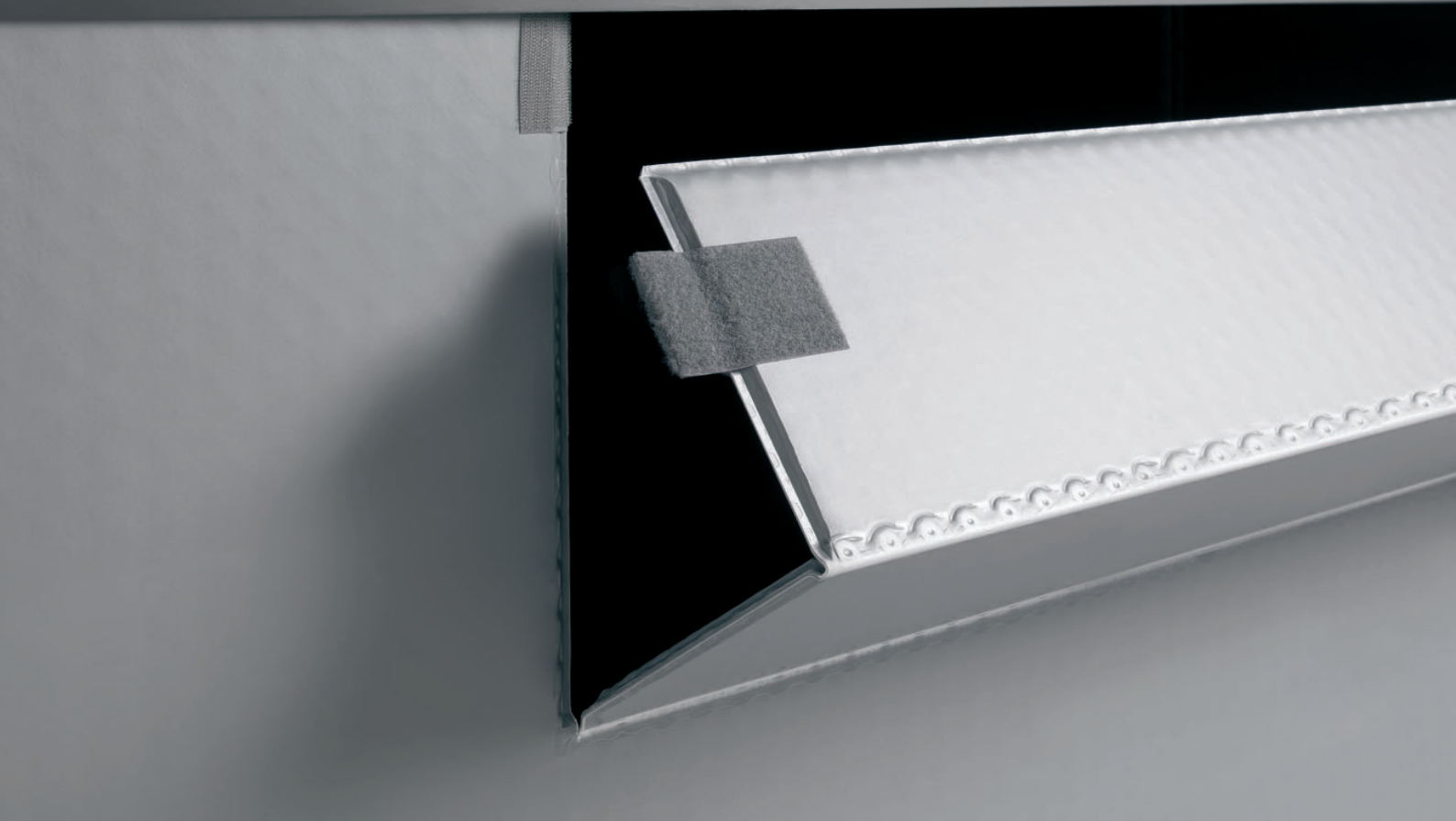
## Features fitting every application

- Individual basic dimensions and heights
- Colours according to customer specification, also bicolour
- Different area weights of the sleeve panels
- Z-folds for volume-reduced folding of extra tall sleeves
- Unloading flaps with safety hinge in freely selectable sizes
- Special "QuickSlide" and "QuickSnap" closures for unloading flaps
- Pallet-specific foot contours
- Punches for base pallet and lid locks
- User-friendly, secure "QuickLock" floor locking system
- Closed edges in two variants:
  - "Standard edge" with flat-embossed closed edge
  - "Round edge" for increased comfort
- RFID or barcode identification
- Transport label and placard label holders
- Printing on one to four sides, also multicoloured, professional design of print layout
- Two-piece sleeves in U- and C-format
- "QuickFit" profile for quick connection of two-piece sleeves
- Container-specific bottom inserts and intermediate layers
- Plug'n Pack sleeve pack system for all classic wooden pallets

## The right composition even for special challenges

- Antistatic or conductive property (ESD)
- Flame retardant according to fire protection classification
- Flaming to ensure printing and lamination
- Food-safe according to EU regulation
- Enhanced UV resistance for outdoor applications





## The variable unloading flap – with our special safety hinge

TRIPLEX pallet enclosures may be equipped with an unloading flap for easy and convenient access to the cargo. The flap dimensions can be customized in width and depth and it also offers a choice of open or closed edges.

Each unloading flap features the TRIPLEX safety hinge. The special hinge geometry enables the unloading flap to close completely, perfectly aligned with the sleeve without gap formation and thus offering important advantages:

- Optimum protection of the transported goods against moisture and dirt
- Smooth opening and closing, user-friendly handling
- Improved stacking safety of the containers due thanks to high load capacity of the unloading flap
- Safe fixation of the flap in open or closed position
- Laboratory-tested durability and longevity

TRIPLEX unloading flaps can also be equipped with an additional safety hinge. This enables access to the cargo even with the lid on.

## QuickSlide and QuickSnap – ingenious locking devices

Various versions are available for easy and safe closing of TRIPLEX unloading flaps. In addition to the conventional Velcro straps, the unloading flaps may be equipped with our innovative QuickSlide or QuickSnap systems. These not only ensure convenient opening and closing of the flaps, but also ensure safe closing of the flap and that it remains closed.

### QuickSlide – the innovative sliding lock

The QuickSlide locking system allows an easy and safe opening and closing of the flap. The slide lock system features a comfortable recessed grip and arrows that indicate the respective sliding direction. This makes the lock completely self-explanatory and very easy to operate.

- Easy handling thanks to sliding mechanism
- Click lock prevents unintentional sliding and unlocking
- Extremely robust due to unbreakable polyamide
- Laboratory tested durability, no material fatigue
- Excellent weather resistance
- Easy to fit even on existing pallet enclosures
- Available in small quantities

### QuickSnap – intuitive snap locking system

Directly integrated into the pallet enclosure, the patented QuickSnap locking system requires no additional components. The opening and closing of the flap is very intuitive and an audible click sound signals to the user when the flap is securely closed.

- Very simple and intuitive operation
- Secure locking
- No additional parts or components
- No material fatigue
- Easy recycling of the pallet enclosure







## Plug'n Pack

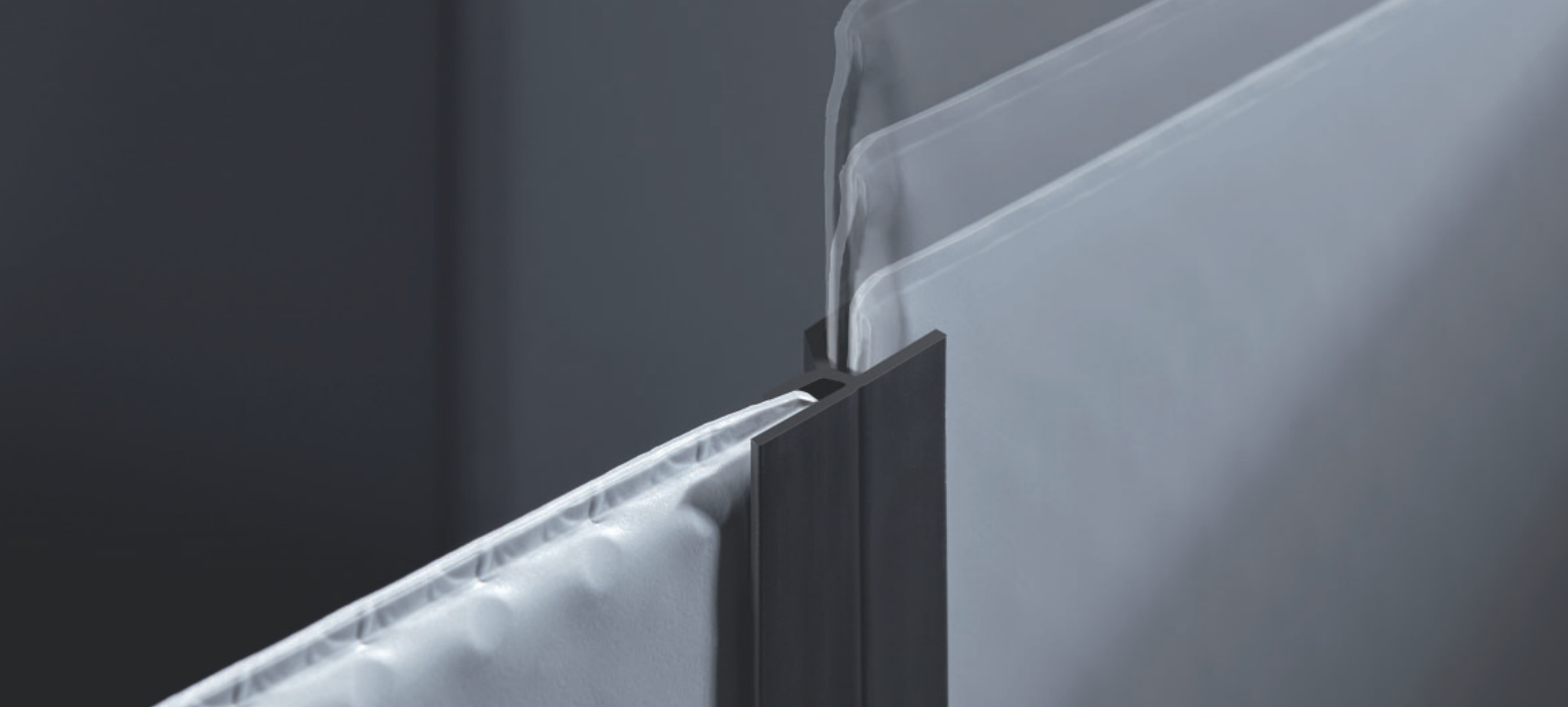
### Plug'n Pack – the quick sleeve pack system

Consisting of a Pallet enclosure and corner adapters, our Plug'n Pack system converts all conventional single as well as reusable pallets into high-quality sleeve pack systems. Simply fit the four sturdy corners adapters onto the pallet and they will provide a safe guide, ensuring the pallet enclosure remains securely fixed. When using common-sized Euro pallets, the system may optionally be fitted with suitable lids allowing to stack the sleeve pack systems on top of each other! After use simply take off the corner adapters and use them again on other pallets. Alternatively, you can screw the corner adapters onto your wooden pallet thus converting it into a permanent sleeve pack system.

Just like all TRIPLEX pallet enclosures, the Plug'n Pack system may be customized to suit your individual requirements. You may select different area weights and panel thicknesses, variable sleeve heights and choose from a variety of options like closed edges, handling holes, document pouches, prints and bottom inserts.

- System components: pallet enclosure and four corner adapters
- Suits all conventional single and reusable pallet without modifications
- Very simple handling
- Very sturdy yet lightweight
- Individual sleeve height
- Lids or protective covers available
- Stackable if used with Euro-size pallets and suitable lids
- All system components are reusable
- 100 % recyclable





## QuickFit – the quick and robust sleeve connecting profile

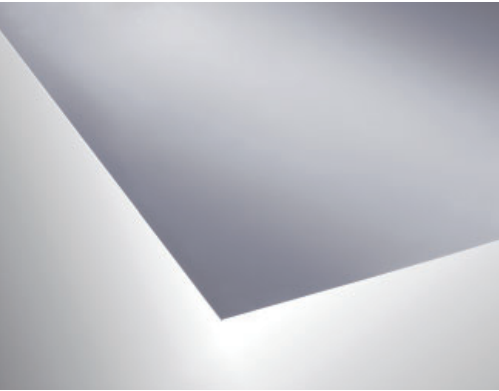
Previously, two-part sleeve pack systems were connected using Velcro straps. The precise positioning of the two sleeve elements used to be time-consuming, prone to errors and the Velcro straps could wear out over time. With the new QuickFit profile system, this inconvenience is a thing of the past.

The QuickFit profile allows for an extremely easy release and connection of the two sleeve parts, as the removable sleeve part is simply pulled out from and re-inserted into the other part. Both sleeve elements are quickly, precisely and firmly connected to each other. Thanks to the profile, the two sleeve parts are always correctly aligned without offset, which significantly increases the stability of the ring and thus of the entire container. Folded together, the pallet enclosure including the profile may be stowed optimally between pallet and lid without taking up too much space.

One very important special feature of the QuickFit profile is the patented locking notch located inside the profile, ensuring a firm connection between the two sleeve parts. During production, the profile is attached to the fixed sleeve part forming a permanent connection with it – simple and without gluing or riveting. The sleeve system thus remains completely recyclable even after the end of its life cycle.

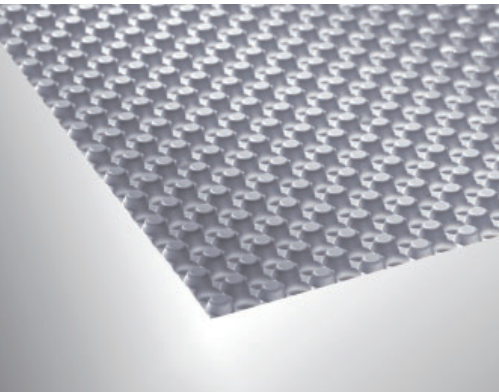
- Universal profile suitable for all two-piece sleeve systems
- Simple and easy handling
- Tested longevity, not material fatigue
- Quick snap-in connection featuring a patented locking notch
- Improved stability of sleeve system
- Made of recycled PP thus recyclable together with the sleeve



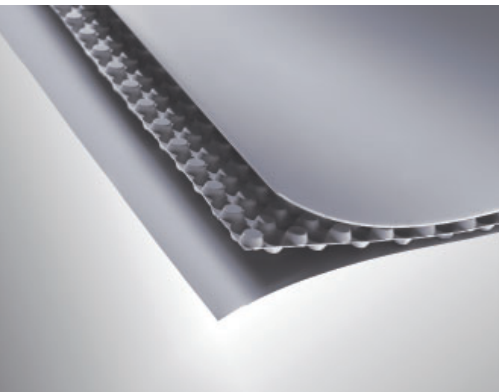


## Structured core panels – the secret lies within

All pallet enclosures of the TRIPLEX brand are made of TRIPLEX structured core panels. Consisting of polypropylene, they are manufactured by firmly welding their three components together. Their unique panel structure results from combining two smooth cover layers with a dimpled middle layer and differs significantly from conventional twin-wall sheets in this respect.

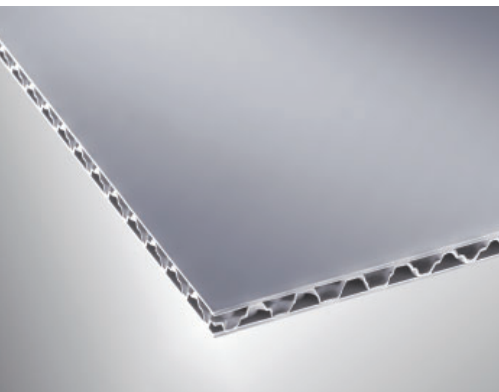


The dimples of the middle layer expand to both sides and are low in overall height, thus achieving an extremely high compressive strength. The low height also ensures a uniform thickness distribution of the dimple tops, thus enabling a firm welding of the middle layer to the top layers.



## The most prominent features – perfectly suitable for sleeve pack systems

- Extremely lightweight
- Outstanding compressive and impact strength
- Rot-resistant and moisture-proof
- Excellent chemical stability
- Good thermal insulation properties
- Organically/food safe
- Smooth, level surface
- Printable using various techniques
- 100 % recyclable





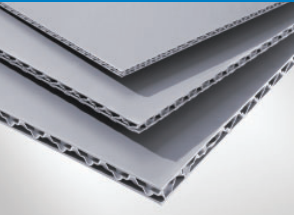
## NextLoop service – good for our environment

TRIPLEX pallet enclosures are made of high-purity polypropylene. A high-quality and valuable raw material that should be preserved within the material cycle in order to protect the environment and conserve resources. To make this important contribution to helping our planet, we implemented the NextLoop service.

During demanding daily use, it is unavoidable that pallet enclosures are damaged or even come to the end of their useful life. When this happens, we will either repair your pallet enclosure or take it back and recycle it to return the material to the value-added cycle. You will receive a small reimbursement for the recycled material, which allows us to join forces in actively protecting our environment. Our NextLoop service is not limited to TRIPLEX pallet enclosures, but extends to almost all similar polypropylene sleeve pack systems available.

For more information on TRIPLEX  
pallet enclosures, visit our website at:  
[www.triplex.info](http://www.triplex.info)





## Our promise

The focus of our work is on ideas to impress and serve our clients, as we strive to anticipate today your needs of tomorrow. We think beyond the conventional approach, to test the imagination and achieve exceptional solutions. Ever open to experience and to new ideas, we aim to continually redefine standards. As a family-owned enterprise, we listen carefully and are mindful of the importance of partnership and fair dealing. Everyone contributes – with heart and mind. We see ourselves as a partner to all: employees, clients and suppliers.

Interplast Kunststoffe GmbH  
Heinrich-Schickhardt-Straße 1  
72221 Haiterbach (Germany)  
Telephone: +49 (0)7456 69083-0  
Telefax: +49 (0)7456 69083-13  
info@interplast.de  
www.interplast.de

Certification:



  
A Brand of Infinex Group